



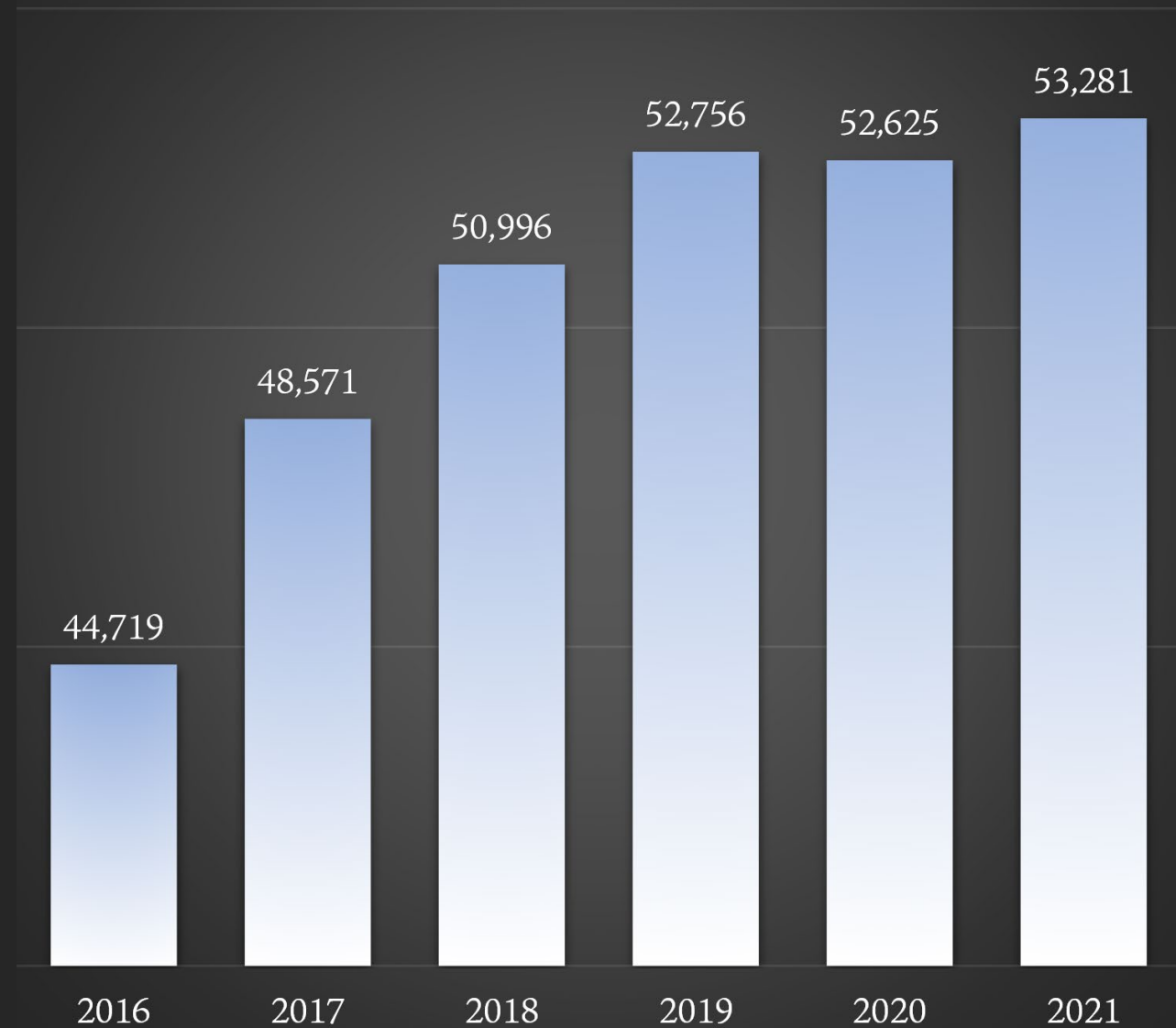
Retention Rate Report

SY2020-2021

Retention Rates: Trends

- Increased retention by 1,621 students per year on average.
- Lost -131 students between SY2019 and SY2020
- Gained 656 students between SY2020 and SY2021

Retention Trend, SY2016-SY2021

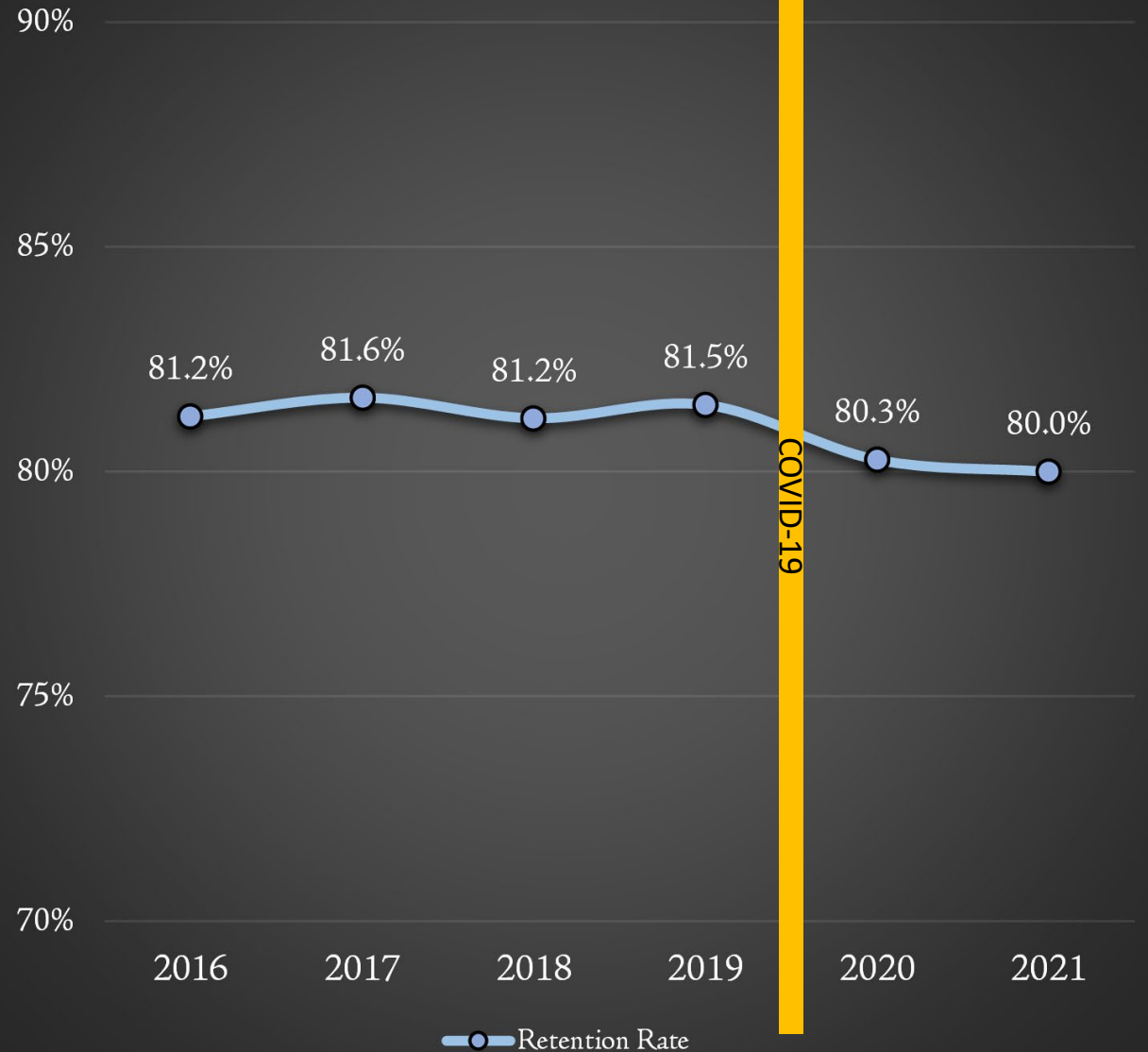


Retention Rates: Trends

Between SY2016 and SY2021, student retention rates declined by -0.3% per year on average.

SCSB's total retention rate declined by -0.3% from SY2020, which is -1.5% lower than SY2019

Retention Rate Trend SY2016 - SY2021



Retention Rates: Trends

75th Percentile Range:

- 86.3% to 87.6%
- Declining annual trend: -0.09% on average

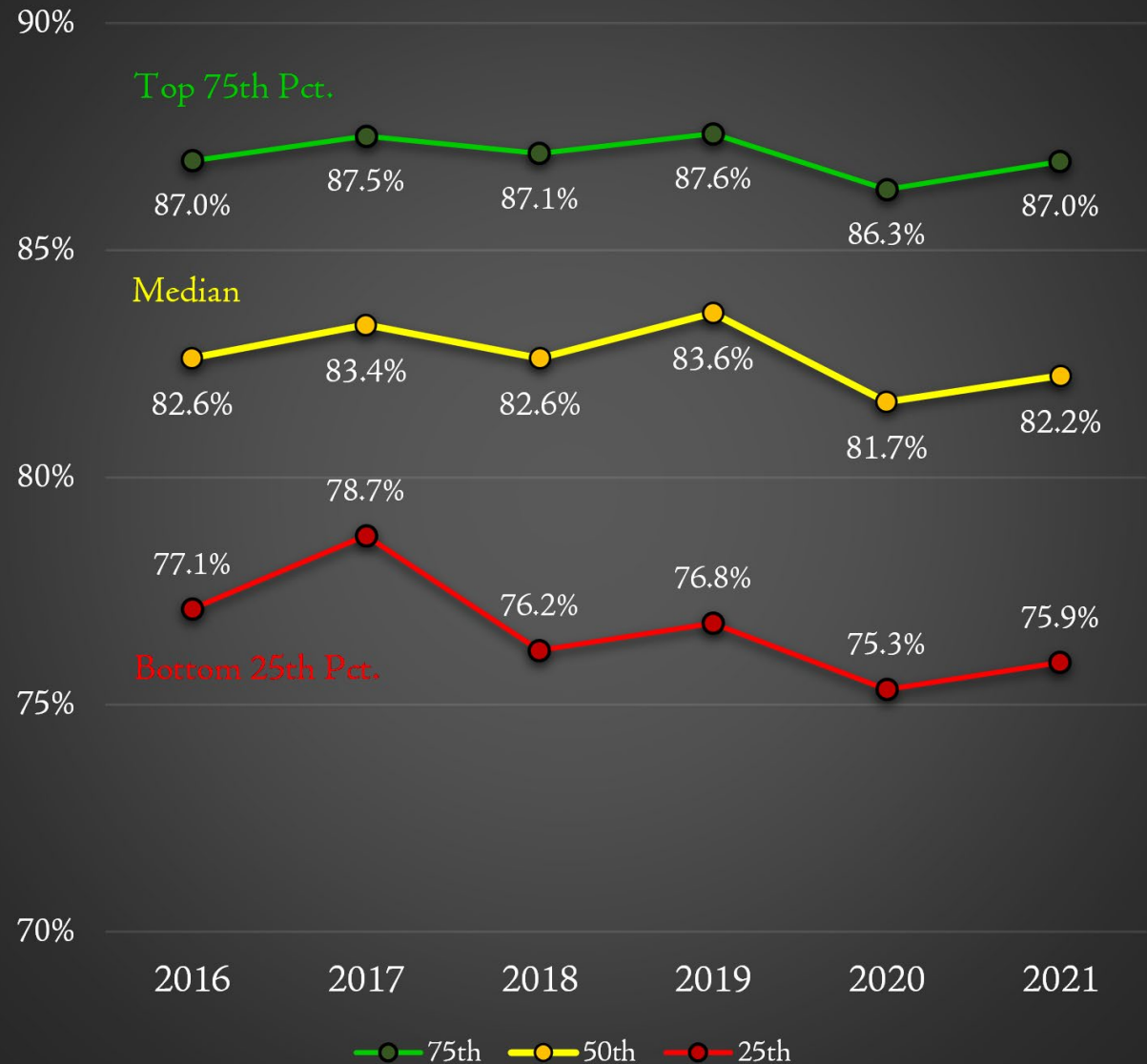
50th Percentile Range:

- 81.7% to 83.6%
- Declining annual trend: -0.17% on average

25th Percentile Range:

- 75.3% to 78.7%
- Declining annual trend: -0.44% on average

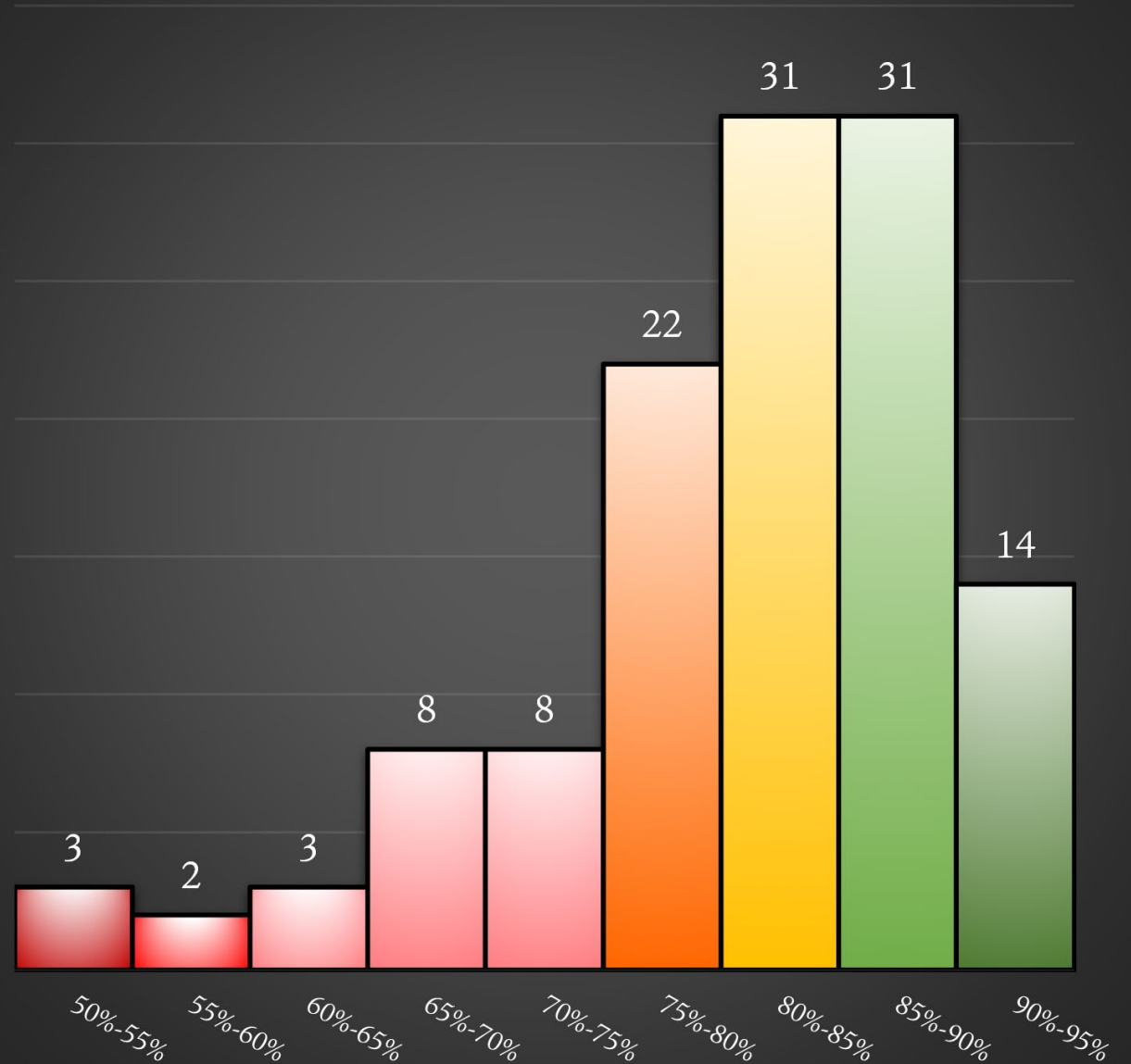
Quartile Retention Rate Trend SY2016 - SY2021



Retention Rates: School Distribution

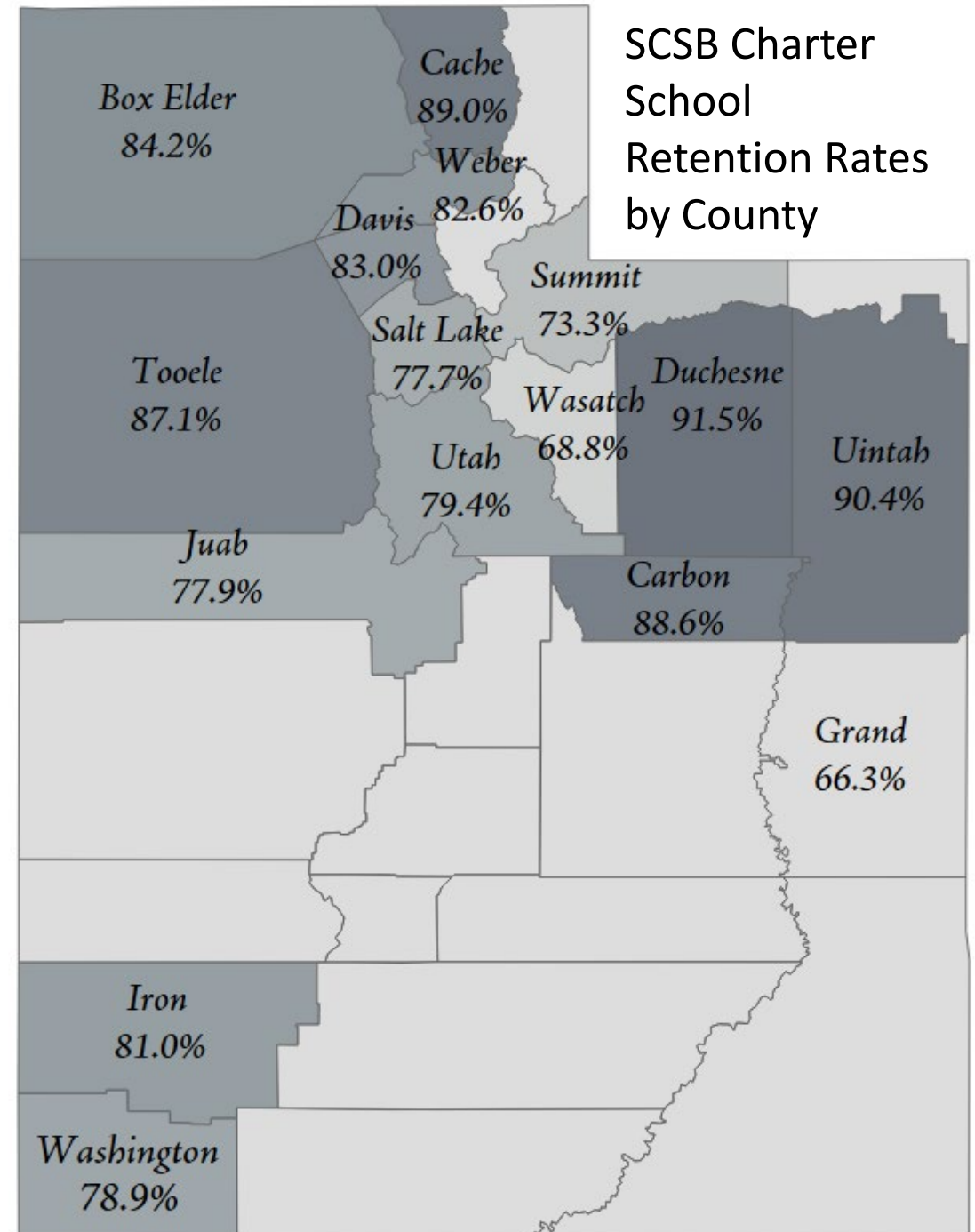
- Negatively skewed distribution of retention rates (skewed to the right)
 - 4.1% of our schools have retention rates below 60%
 - 59.0% of our schools have retention rates between 60% and 85%
 - 36.9% of our schools have retention rates above 85%

Distribution of Retention Rates SY2021



Retention Rates: Geographic Distribution

- Highest retention
 - Duchesne County: 91.5%
 - Murray City: 54.3%
- Lowest retention
 - Grand County: 66.3%
 - Murray City: 54.3%

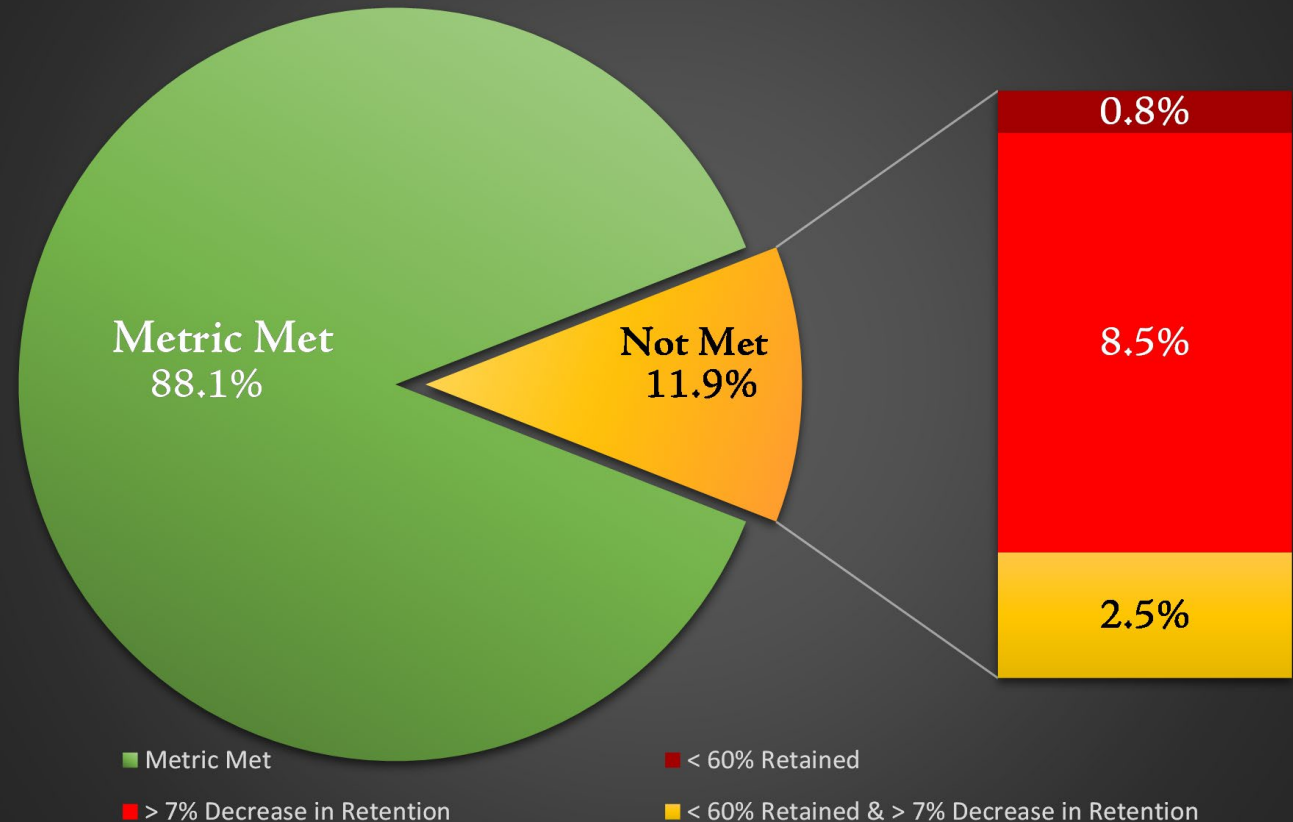


Retention Rates: Performance Indicator

- Schools must meet a two-part metric
 - Year over year retention rate $\geq 60\%$
- AND-**
- No more than 7% lower than prior year's rate

Charter Schools Meeting the Retention Rate Metric, SY2020

N = 118



Retention Rates: Distribution

- Staff examines retention rates on a case-by-case basis.
 - Staff considers whether a school's retention rate is consistent with the rates of other schools of the same type
 - Staff considers whether there is a declining trend
 - Staff considers other intervening factors

Number of times a school has been in the bottom 10% of retention, SY2016 to SY2021

Number of Years	Number of Schools
6 years	3
5 years	2
4 years	4
3 years	0
2 years	4
1 year	13



THANK YOU

Data Analyst | robert.kohutek@schools.Utah.gov

UTAHSCSB.ORG